

**SAVE THE
DATE!**



August 17 -18, 2015

Aurora, CO



NIOSH



Improving Worker Safety and Health Among American Indians/Alaska Natives (AI/AN): A Partnership Workshop

Report on the NIOSH American Indian/Alaska Native Workshop



NIOSH



NIOSH Launches Worker Safety and Health Initiative for American Indians and Alaska Natives



Tribal Workforce

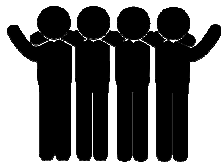
.08 % of the US workforce



Tribes often the largest employer




Limited OSH research



No AI/AN OSH group

SAVE THE DATE!



Improving Worker Safety And Health Among American Indians/Alaska Natives:
A Partnership Workshop


Please join us to:

- Meet and network with tribal, academic and government partners to discuss common worker safety, health and wellness issues and solutions
- Identify opportunities to work together to improve worker safety, health and wellness
- Learn about tribal resources, funding, data sources and surveillance systems that can help you develop worker safety and health initiatives

*** No cost for attendance; travel scholarship available ***

To register or for more information on scholarship, contact Dalsey at cdalsey@cdc.gov or [202.328.6000](tel:2023286000)

August 17-18, 2015
Aurora, CO

NIHB Public Health Broadcast

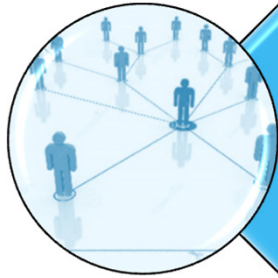
CDC Offers a Workshop on American Indian and Alaska Native Worker Safety and Health

Please join CDC on August 17-18 in Aurora, Colorado for the *Worker Safety and Health among American Indians/Alaska Natives: A Partnership Workshop*. The Centers for Disease Control and Prevention/National Institute for Occupational Safety and Health in collaboration with the Mountain and Plains Education and Research Center is excited to bring together American Indian and Alaska Native (AI/AN) communities, organizations, and other stakeholders to:

- Meet and network with tribal, academic and government partners to discuss common worker safety, health and wellness issues and solutions
- Identify opportunities to work together to improve worker safety, health and wellness
- Learn about tribal resources, funding, data sources and surveillance systems that can help you develop worker safety and health initiatives

WHO SHOULD ATTEND?

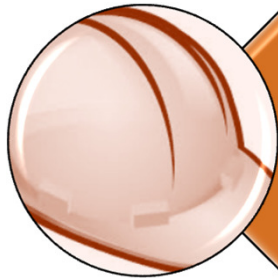
Goals



Networking

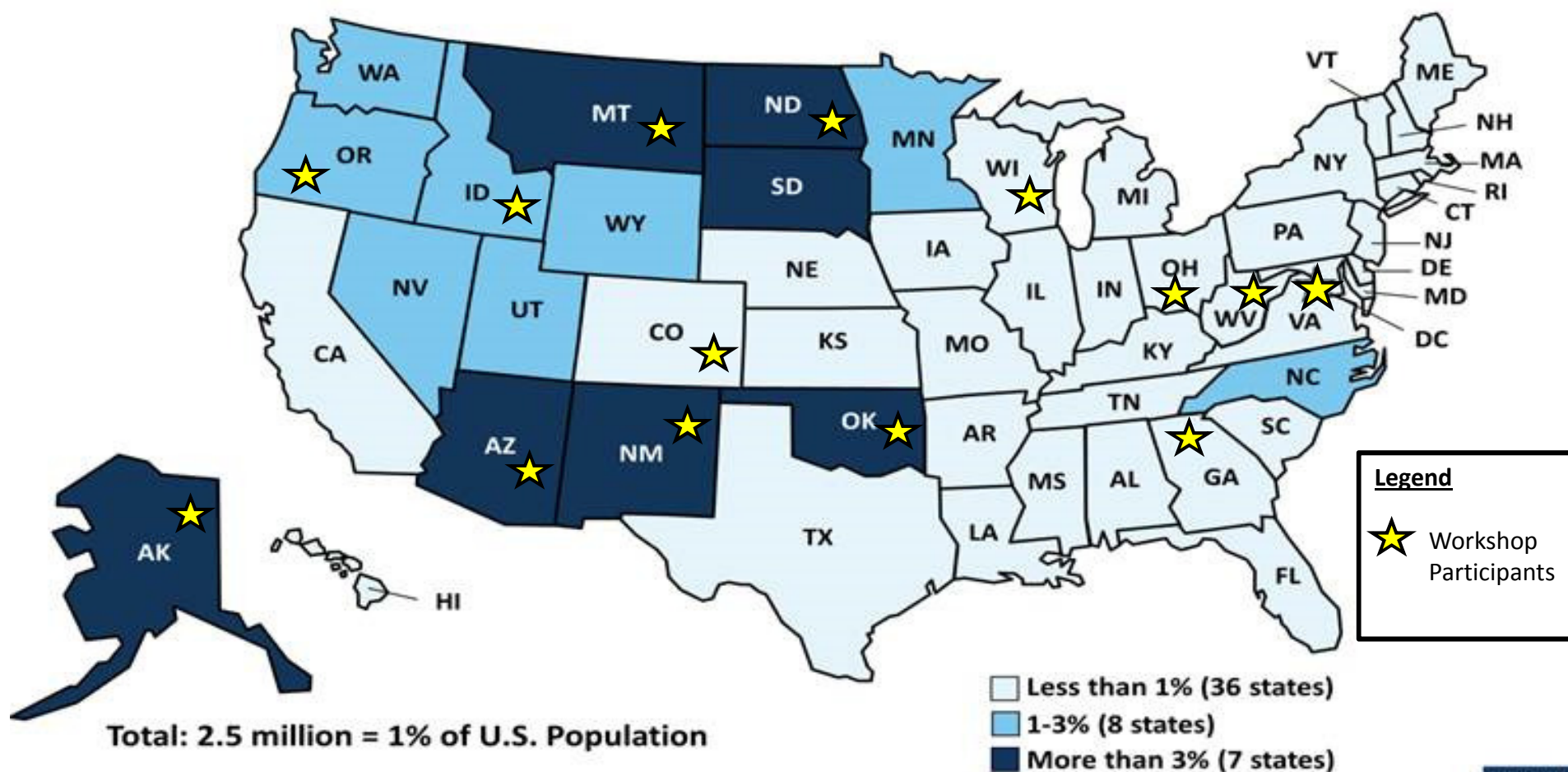


Collaboration



Tribal OSH Activities

American Indians and Alaska Natives as a share of the Total Population by State, 2009 - 2011



American Indian and Alaska Native includes people of Hispanic origin.
SOURCE: KCMU analysis of 2009 - 2011 ACS.

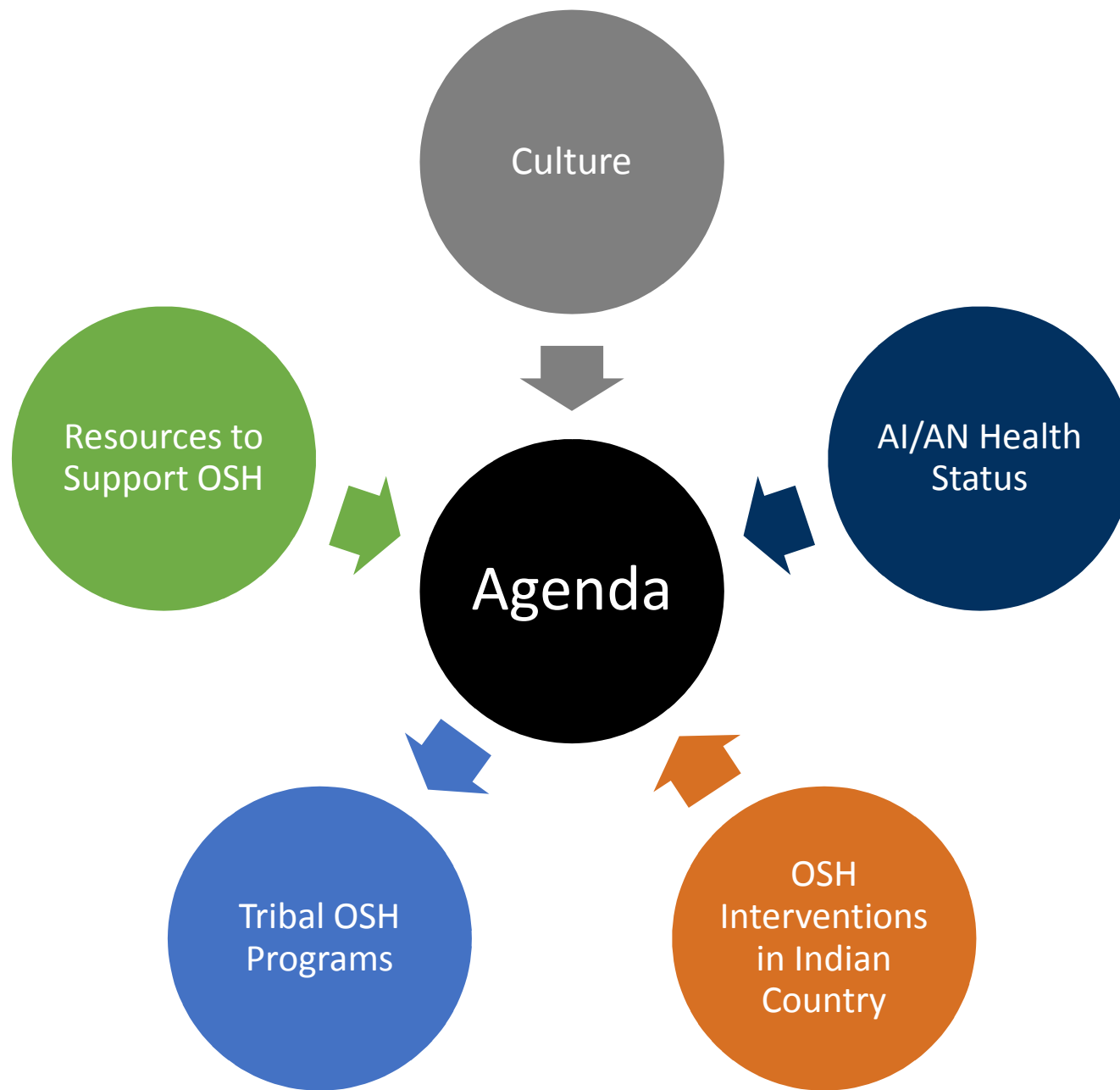




- Tribal Safety & Health Professionals
- Tribal Epidemiologists
- Tribal Organizations
- State Health Department Representatives
- Academia
- Physicians
- Federal Government



- Tribal Safety & Health Professionals
- Tribal Epidemiologists
- Tribal Organizations
- State Health Department Representatives
- Academia
- Physicians
- Federal Government









Small Group Activity



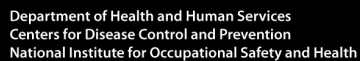
Challenges

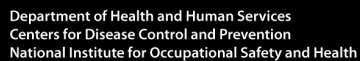


Data and
Surveillance



Leadership





Evaluations



“This was a great and wonderful learning experience and look forward to the movement of this initiative.”

“Great to see and hear from different organizations and agencies.”

Evaluations



“This was a great and wonderful learning experience and look forward to the movement of this initiative.”

“Great to see and hear from different organizations and agencies.”



Build Network



Develop Steering Committee



Conduct Site Visits



Build Network



Develop Steering Committee



Conduct Site Visits

Thank You!

AI/AN Planning Committee, MAPERC, NIHB
CSTE and WSD