

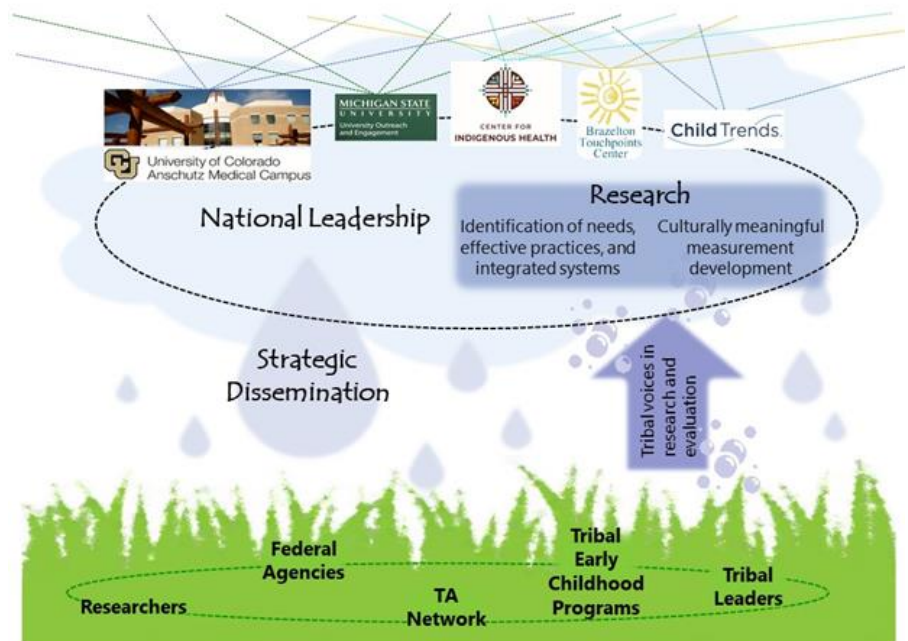
# Tribal Early Childhood Research Center

## Overview of our Work and Approach



### About the TRC

The mission of the **Tribal Early Childhood Research Center (TRC)** is to grow the field of early childhood research in partnership with American Indian and Alaska Native (AIAN) Head Start, Home Visiting, Child Care, and Temporary Assistance for Needy Family program leaders, community partners, early childhood and family economic wellbeing researchers, the Administration for Children and Families (ACF) federal staff, and a broad network of ACF-supported and other early childhood initiatives and national centers serving AIAN communities.



### Our Partners

The TRC draws on a network of partners from across the country who have expertise in collaborating with AIAN communities in early childhood research, evaluation, and practice. The TRC Leadership Team is led by researchers at the University of Colorado with support from partners at Michigan State University, the Johns Hopkins Center for Indigenous Health, Brazelton Touchpoints Center, and Child Trends.

### Our Areas of Work



#### National Leadership

We work with AIAN communities and early childhood partners to continually inform and refine our activities to grow the field of early childhood research.



#### Scientifically and Culturally Rigorous Research

We conduct research in consultation and collaboration with a broad network of partners who gather as Communities of Learning to grow our understanding of AIAN child development and to advance early childhood research, policy, and practice.



#### Strategic Dissemination

We leverage multiple communication channels to share resources and research on AIAN children's development in the context of family, community, culture, and Tribal early childhood programs.

# Our Approach



## Communities of Learning and Research

The TRC's research activities are co-created in Communities of Learning (CoLs). As new efforts begin, the TRC Leadership Team draws on its partnership network of researchers, early childhood program and organizational leaders, and federal partners to establish CoLs that engage in all phases of the research, including defining goals and priorities, informing methodological decisions and implementation, interpreting results, and guiding dissemination of findings. The TRC has formed CoLs to examine developmental screening in Tribal communities, Indigenous early relational wellbeing, Indigenous family economic wellbeing, and Native culture and language in the classroom among other topics.



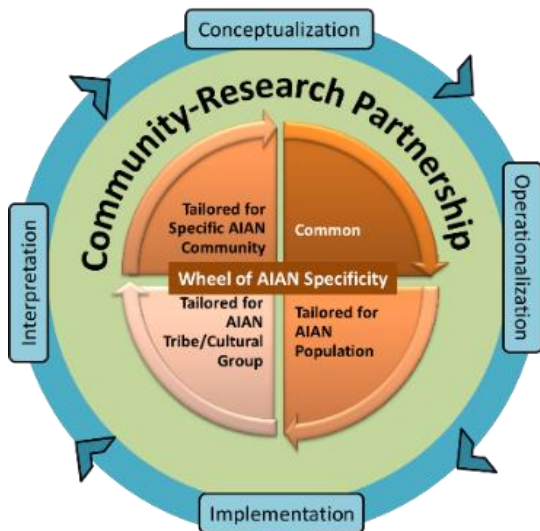
## Training, Professional Development, and Networking

Facilitating opportunities for multi-directional learning is a priority of the TRC. Every other year, we offer a week-long summer institute course on early childhood research with Tribal communities in partnership with the Johns Hopkins Center for Indigenous Health. We provide scholarships to a select number of graduate students and practitioners interested in growing their knowledge and skills through the course. We also host an annual Virtual Learning Circle Series in partnership with Brazelton Touchpoints Center. The learning circles are intended to bridge research-to-practice and practice-to-research gaps by bringing together program staff and researchers to focus on emerging and relevant topics of interest.



## Forums for Tribal Voices in Research

The TRC cultivates forums for Tribal voices in research by supporting the Native Children's Research Exchange (NCRE) conference. NCRE provides a space for researchers, evaluators, and Tribal program and community partners to gather and exchange information and ideas about their shared work and commitment to AIAN children's development.



## Attention to Measurement

The TRC employs a [measure development cycle framework](#) created by Drs. Michelle Sarche, Allison Barlow, and Nancy Whitesell (TRC Leadership Team Members) in collaboration with Dr. Melissa Walls (Johns Hopkins Center for Indigenous Health) to guide its measurement focused CoLs. Applying this framework supports the TRC's goal to increase the availability of culturally and contextually valid measures of early development and developmental supports.

## CONNECT WITH US



@TribalEarlyChildhoodResearchCenter



@TheTRC



tribalearlychildhood@cuanschutz.edu

Visit our website at: [www.tribalearlychildhood.org](http://www.tribalearlychildhood.org)