



# Center for American Indian and Alaska Native Diabetes Translation Research

Expanding and Enhancing Research  
Addressing Diabetes in Native Communities

Spero M. Manson, Angela G. Brega, Meredith P. Fort,  
Sarah A. Stotz, & Ka'imi A. Sinclair

# Overview

- Introduction to the Center
- Overview of Cores & Programs
- Highlight the Satellite Center Network
- Get Input on How the CDTR Can Best Support You

# Impact of Diabetes on American Indian & Alaska Native (AI/AN) Populations

AI/ANs have the highest rate of diabetes of any US racial/ethnic group

Compared to the non-Hispanic White population in the US:

- Native adults are almost twice as likely to be diagnosed with diabetes
- Native youth have highest prevalence of any US racial/ethnic group
- Native women are nearly twice as likely to develop gestational diabetes

AI/ANs have high rates of complications (e.g., ESRD, amputations)

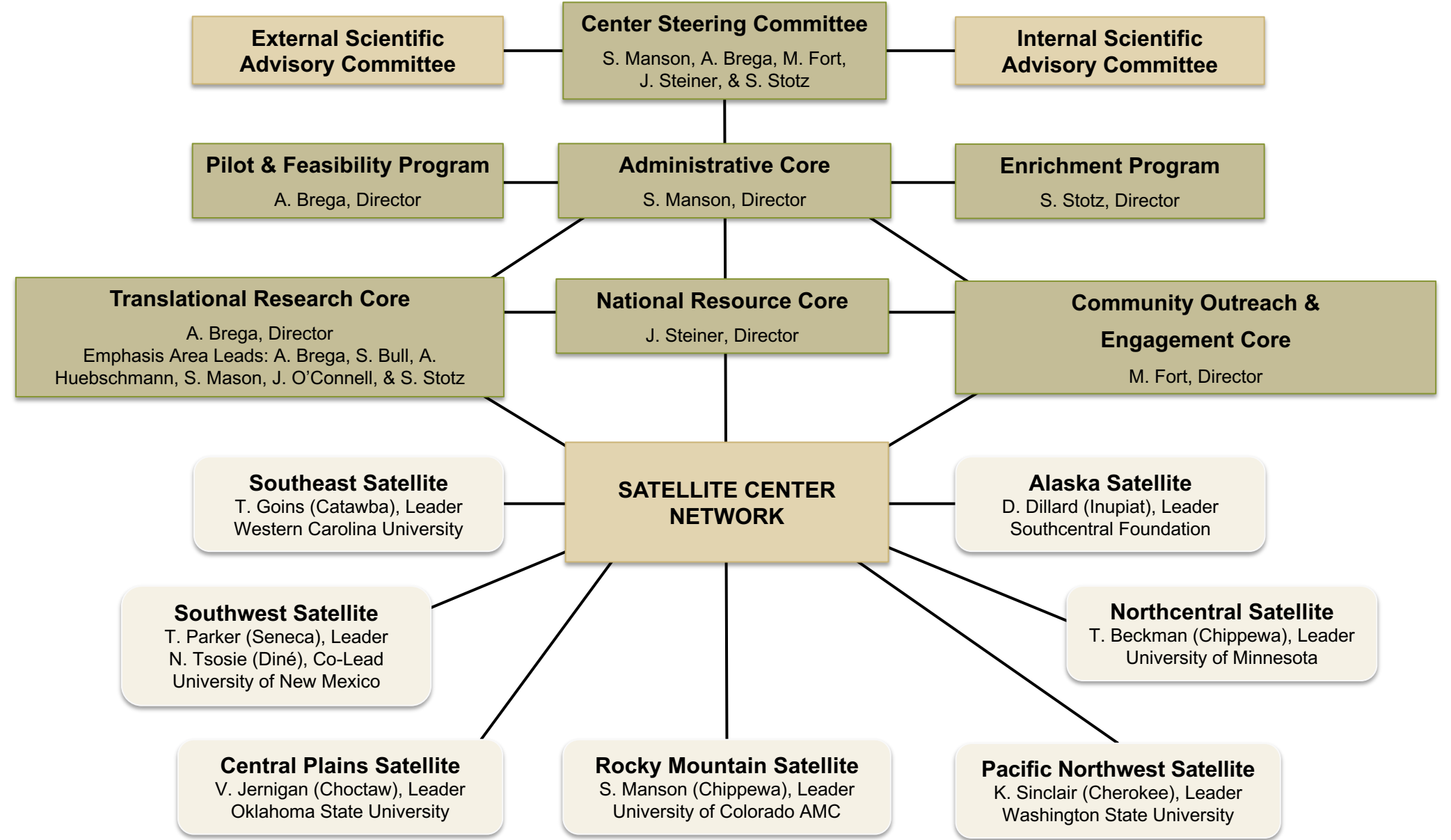
# Center for American Indian and Alaska Native Diabetes Translation Research



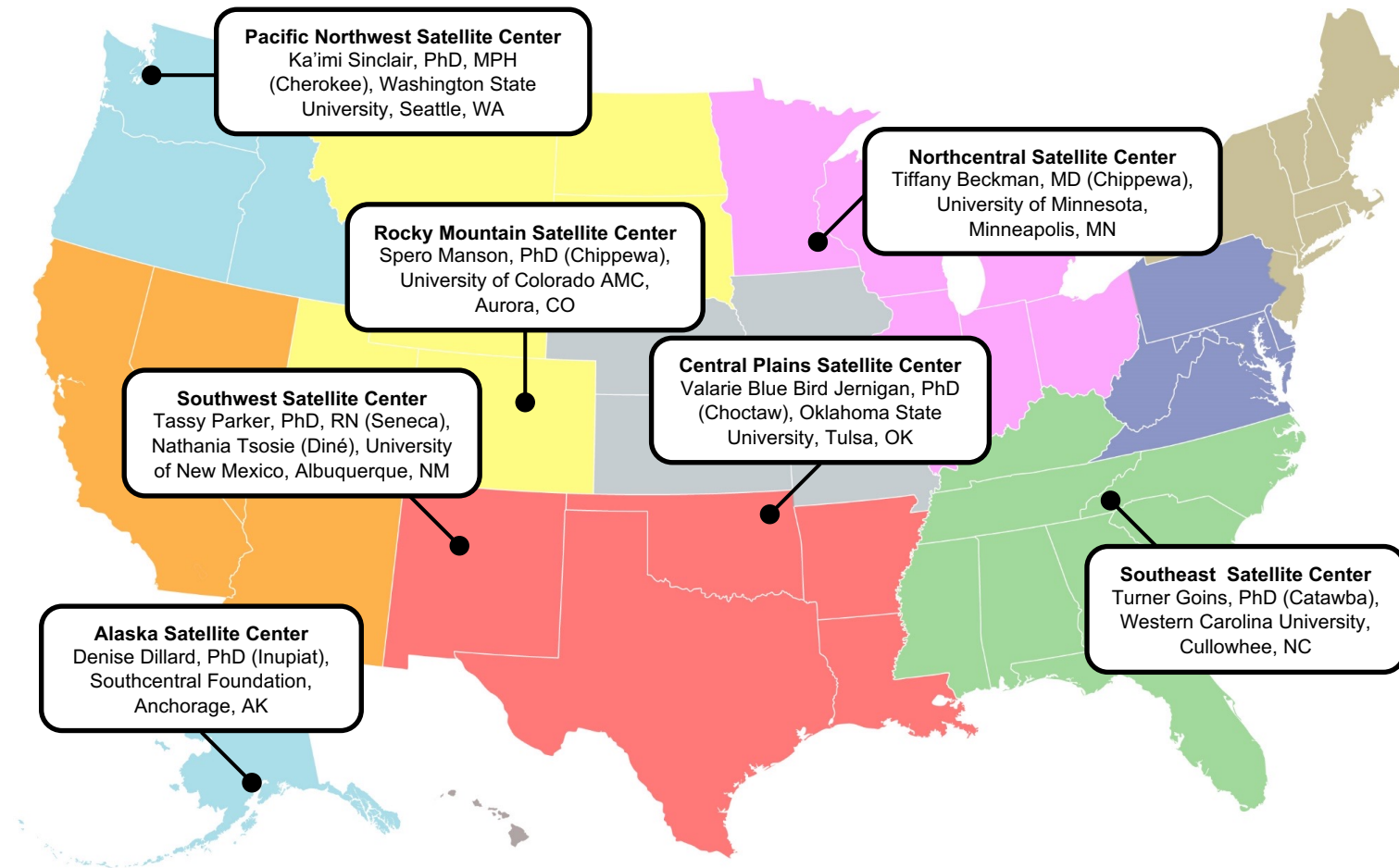
Spero M. Manson, PhD

- Funded by NIDDK in 2011
  - Renewed for another 5-year cycle, 2021-2026
- Translate research of proven efficacy into practice, with the goal of improving the diabetes-related outcomes of Native people
- Resource center designed to promote excellence in translation research and expand capacity for diabetes translation research addressing AI/AN populations
- Local impact and national reach through innovative Satellite Center Network

# Center for American Indian and Alaska Native Diabetes Translation Research



# Research Base



# Translation Research Core



Angela G. Brega, PhD

- **Purpose:** Promote excellence and build capacity in diabetes translation research addressing Native populations among our Research Base members
- Facilitate training, technical assistance, & consultation related to:
  - Cultural adaptation
  - Health literacy
  - Health information technology
  - Dissemination and implementation science
  - Cost/sustainability
  - Qualitative research methods
- Details on requesting services is forthcoming

# National Resource Core



John F. Steiner, MD,  
MPH, Kaiser  
Permanente CO  
Institute for Health  
Research

- **Purpose:** Facilitate and collaborate on diabetes translation research with external partners seeking to prevent and/or treat diabetes in Native people
- Strengthen & expand network of partners
  - Researchers, clinicians, policy/advocacy groups, communities
  - Examples: Urban Indian Health Organizations; Tribal Epidemiology Centers
  - Role of our Satellite Center Network
- Areas of Focus
  - Needs raised by community partners
  - Expanding support for Urban Indian Health Programs
  - Addressing social needs; Diabetes registries

# Community Outreach & Engagement Core



Meredith P. Fort,  
PhD, MPH

- **Purpose:** Engage with community partners to facilitate the exchange and dissemination of diabetes translation research and priorities
- Elevated to a core because of critical part community engagement plays in the success of translation research
- **Areas of Focus:**
  - Work with partners to ensure diabetes translation research agenda includes local, regional, and national priorities
  - Facilitate the exchange of expertise and relevant findings between community organizations, scientific community, clinicians, public health practitioners, and policy makers
  - Coordinate with Satellite Center Network: needs assessment and symposia
  - Strengthen and expand collaborations

# Pilot & Feasibility Program



Angela G. Brega, PhD

- Funding to support research relevant to diabetes in AI/ANs
  - Open to a wide range of topics
  - Focus on secondary analysis projects
- Projects are 18 months in duration
  - First 12 months: Complete & publish a secondary analysis
  - Final 6 months: Training and support for grant development
  - \$37,500 in total direct costs per award
- Eligibility
  - Early-stage investigator at any university eligible for NIH funds
- RFA is available on the website

# Collaborative National Pilot & Feasibility Program

- New this year
- Support research on COVID-19 & diabetes, obesity, or metabolism
  - Projects can be at the basic science, clinical, or community levels.
- Goal is to expand collaboration between investigators from two or more Diabetes Research Centers (DRCs) and/or Centers for Diabetes Translational Research (CDTRs) at different institutions.
- Pilot grants (\$100,000) and mini-grants (\$10,000)
- RFA is available on the website
- Contact: [Angela.Brega@cuanschutz.edu](mailto:Angela.Brega@cuanschutz.edu)

# Enrichment Program



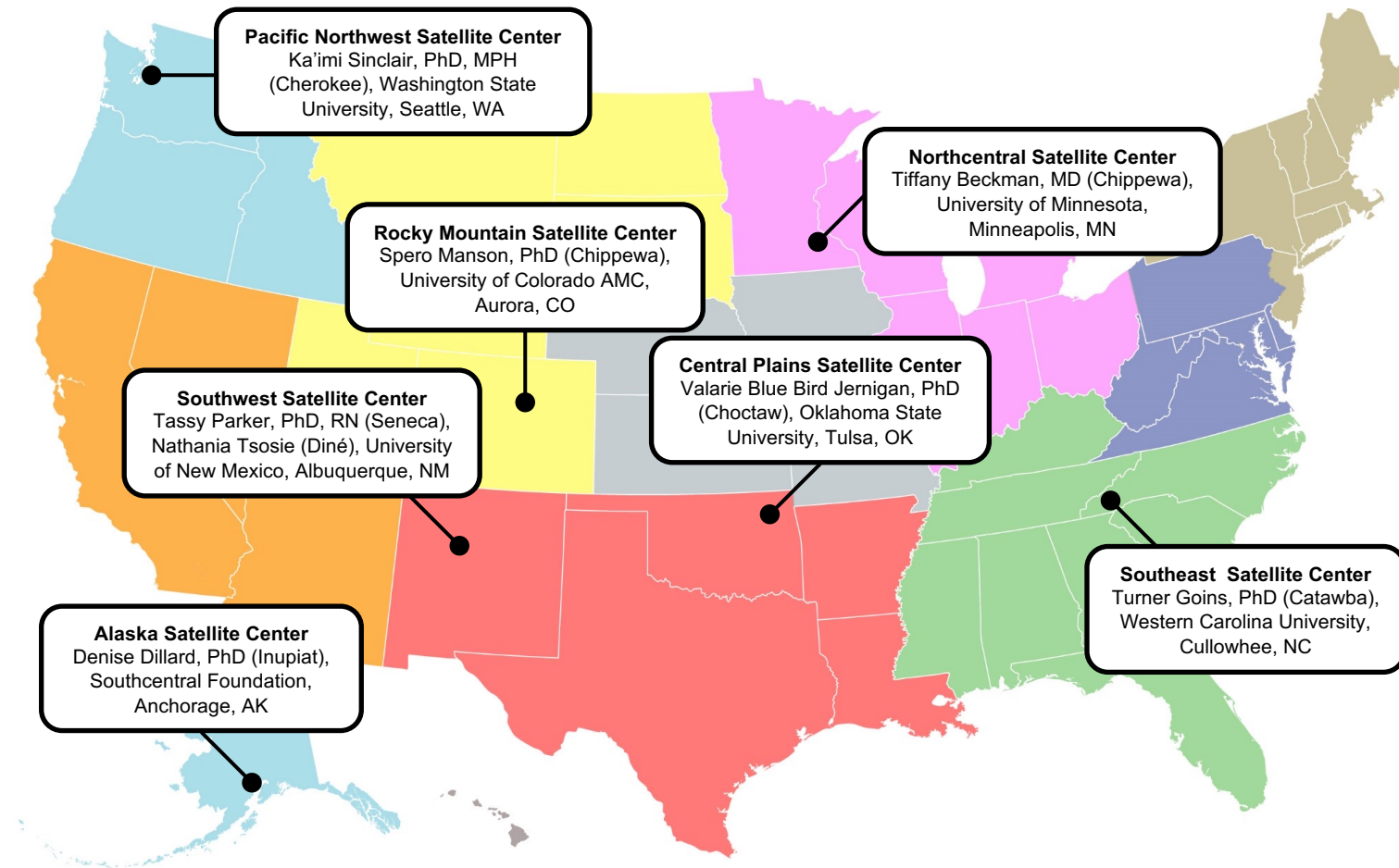
Sarah Stotz, PhD,  
MS, RDN, CDE

- Expansive Distribution List (Research Base, community partners)
- Webinar Series
  - Quarterly webinars on AI/AN diabetes translation research
  - Research presentations, hands-on training workshops, panel discussions
  - Educational value, engage Research Base/partners, identification of collaborators
- Work-in-Progress Workshops
  - Quarterly meetings to review manuscripts, grants, analysis plans, etc.
  - Enhancing quality through input from junior and senior faculty
  - Ideas in progress: building new collaborations
- Quarterly Newsletter
  - Publications, grants, training opportunities, spotlight features
  - Crowd sourcing for content

# CDTR Satellite Centers



Ka'imi Sinclair, PhD



# Satellite Centers

- Develop a local stakeholder group
- Identify and engage prospective Research Base members



# Satellite Centers

- Identify early-stage investigators to apply to CDTR pilot study program
- Serve as local mentor of a pilot study investigator



Amber Fyfe Johnson, ND, PhD



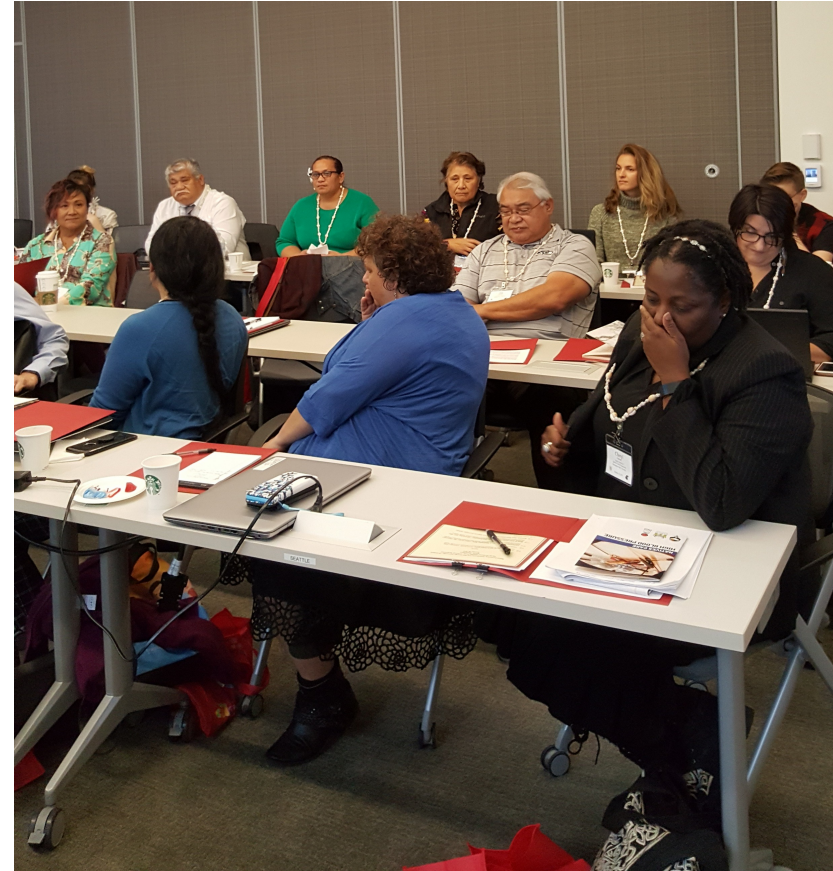
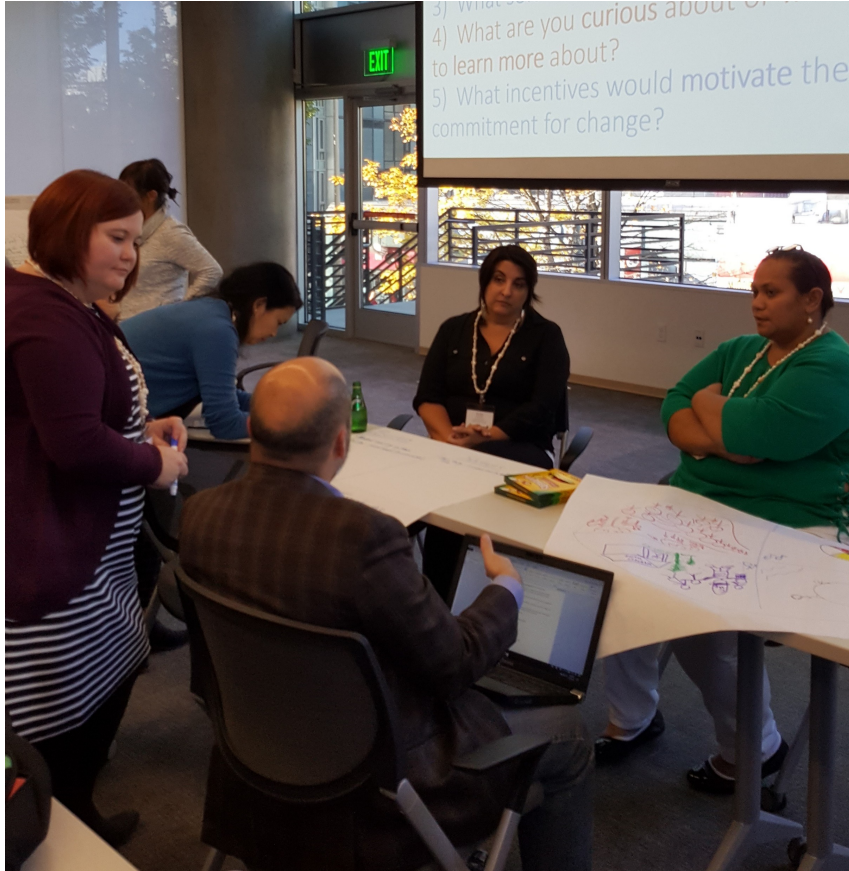
Cassandra Nikolaus, PhD



Lucy Hebert, PhD

# Satellite Centers

- Develop, offer, and evaluate an annual symposium on cardiometabolic health



# Breakout Room Discussion Topics

1. Introductions
  - a) Name, institution/organization, location
  - b) Short summary of the work you do related to diabetes with AI/AN people and/or diabetes translation research
2. What do you want from the CDTR?
3. Suggestions for Webinar Series
  - a) Topics
  - b) Speakers
  - c) Cross-promotion of events
4. Quarterly Newsletter Topics
  - a) Publications, grants awarded, funding opportunities, upcoming webinar/trainings, highlight diabetes translation research success stories
  - b) Crowd-sourcing of newsletter content



# Center for American Indian and Alaska Native Diabetes Translation Research

For questions about pilot funding or the Center:

[Angela.Brega@cuanschutz.edu](mailto:Angela.Brega@cuanschutz.edu)

To learn more about CAIANDTR:

<https://coloradosph.cuanschutz.edu/research-and-practice/centers-programs/caianh/projects/CAIANDTR>