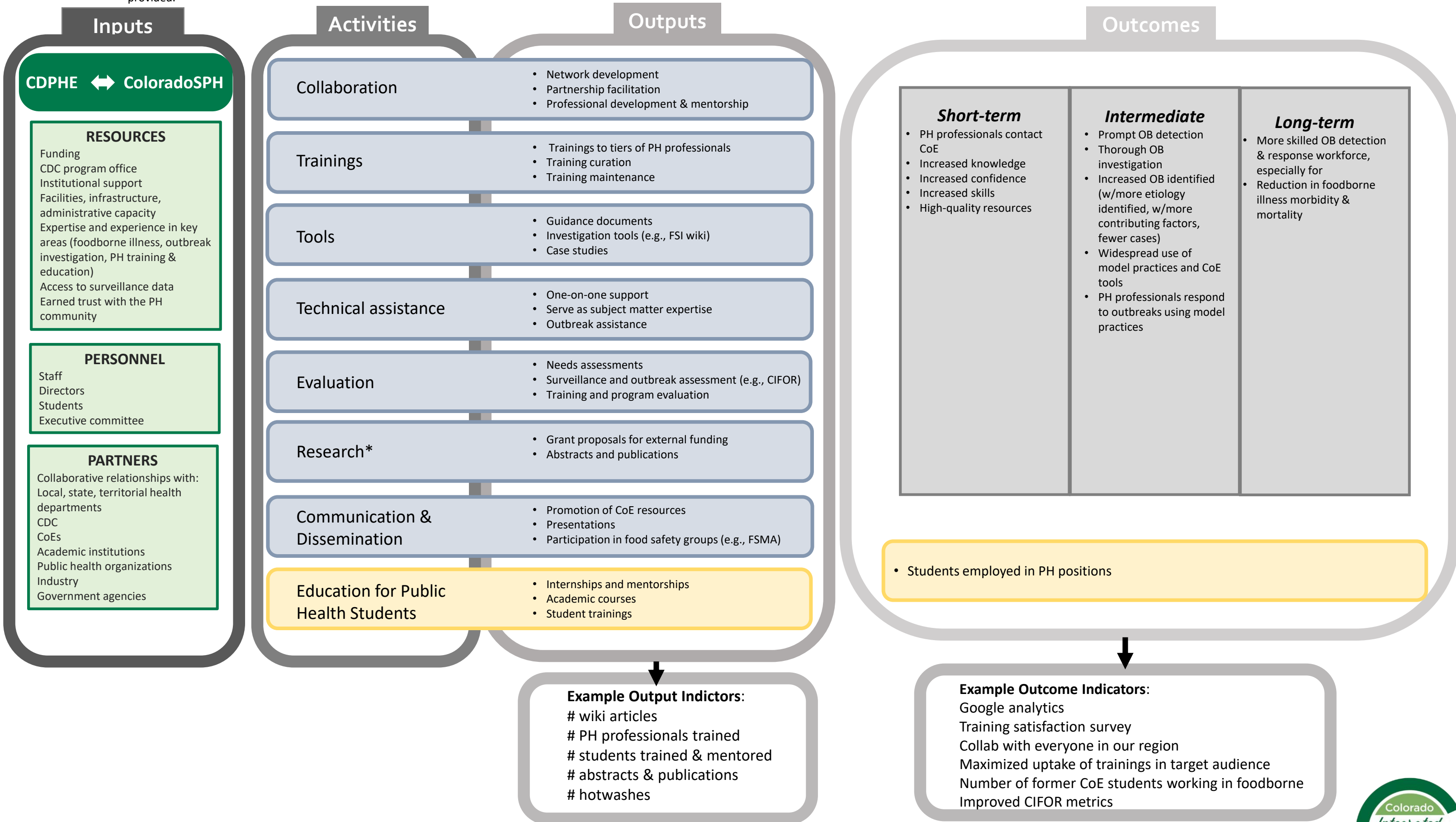


Logic Model for CO CoE Program Evaluation

The goal of this logic model is to communicate to stakeholders the purpose of the CO CoE, its intended results and the causal pathways leading to these results. The model consists of a graphical representation of the inputs (resources), activities, outputs (tangible results of the activities) and outcomes (desired results of the program; broken down by short-term, intermediate and long-term outcomes). Specific indicators for measuring outputs and outcomes are also provided.



Abbreviations: CDPHE, Colorado Department of Public Health and Environment; CoE, Center of Excellence; ColoradoSPH; Colorado School of Public Health; PH, public health; CDC, Centers for Disease Control and Prevention, OB; outbreak ; CIFOR, Council to Improve Foodborne Outbreak Response

*All research activities performed with non-ELC funds

